

Title Slide

Introduction

What Is It?

What Can I Answer?

How can I Apply It?

Application Example

More About Zyler

Periodic Table of Methods

Zyler Tech Strategy Tool Kit

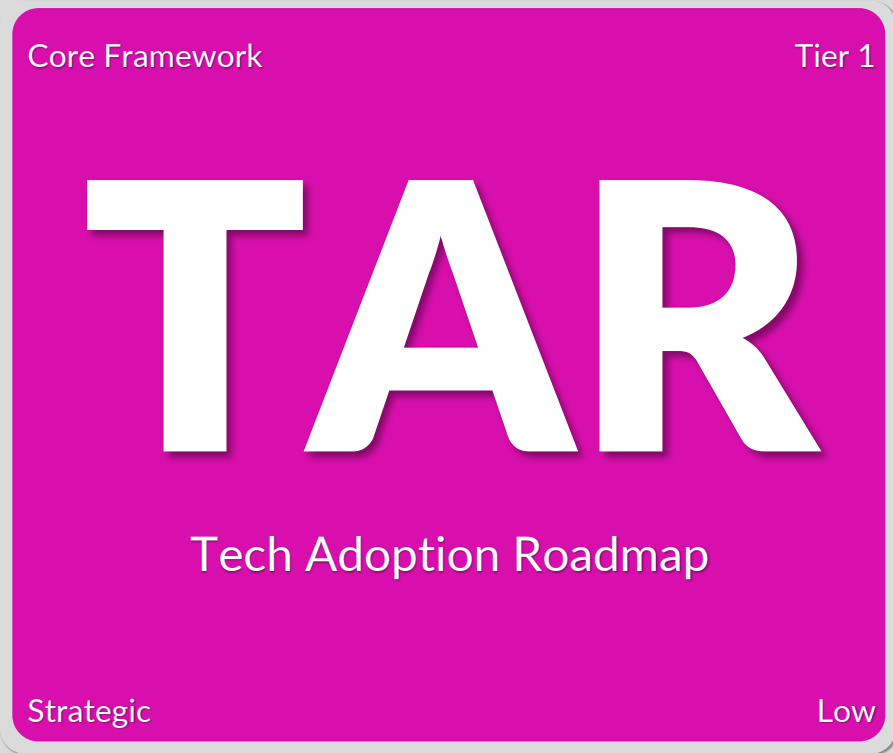


TECH ADOPTION ROADMAP

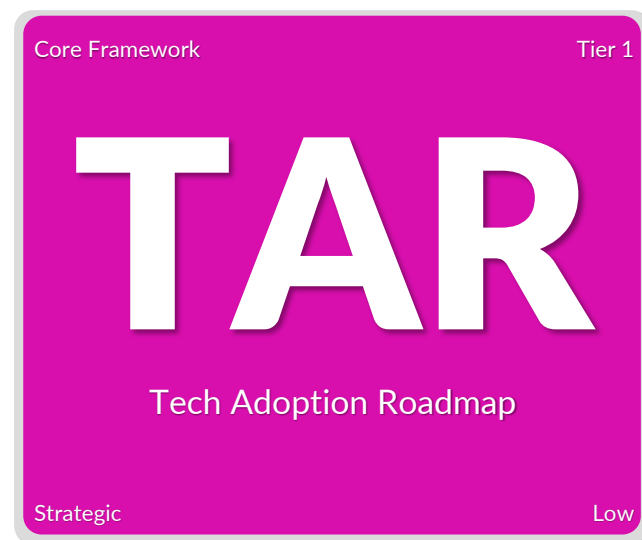
Tech Strategy Framework + Method

Technology Adoption Roadmap (TAR)

Approach for systematic planning, assessment, and adoption of emerging technology for industry *Tech Seekers*.



Title Slide
Introduction
What Is It?
What Can I Answer?
How can I Apply It?
Application Example
More About Zylter
Periodic Table of Methods



> WHAT IS IT?

The Technology Adoption Roadmap (TAR) provides an approach to execute each of the key actions required to successfully find and adopt emerging technology for industry.

Each key action in the TAR approach is aligned with resources from the Tech Strategy Tool Kit to guide the planning and assessments require.

Helpful Hints:



This is a core concept for Zylter's approach to emerging tech adoption. Each key action in the TAR approach is aligned with resources from the Tech Strategy Tool Kit to guide the planning and assessments required.



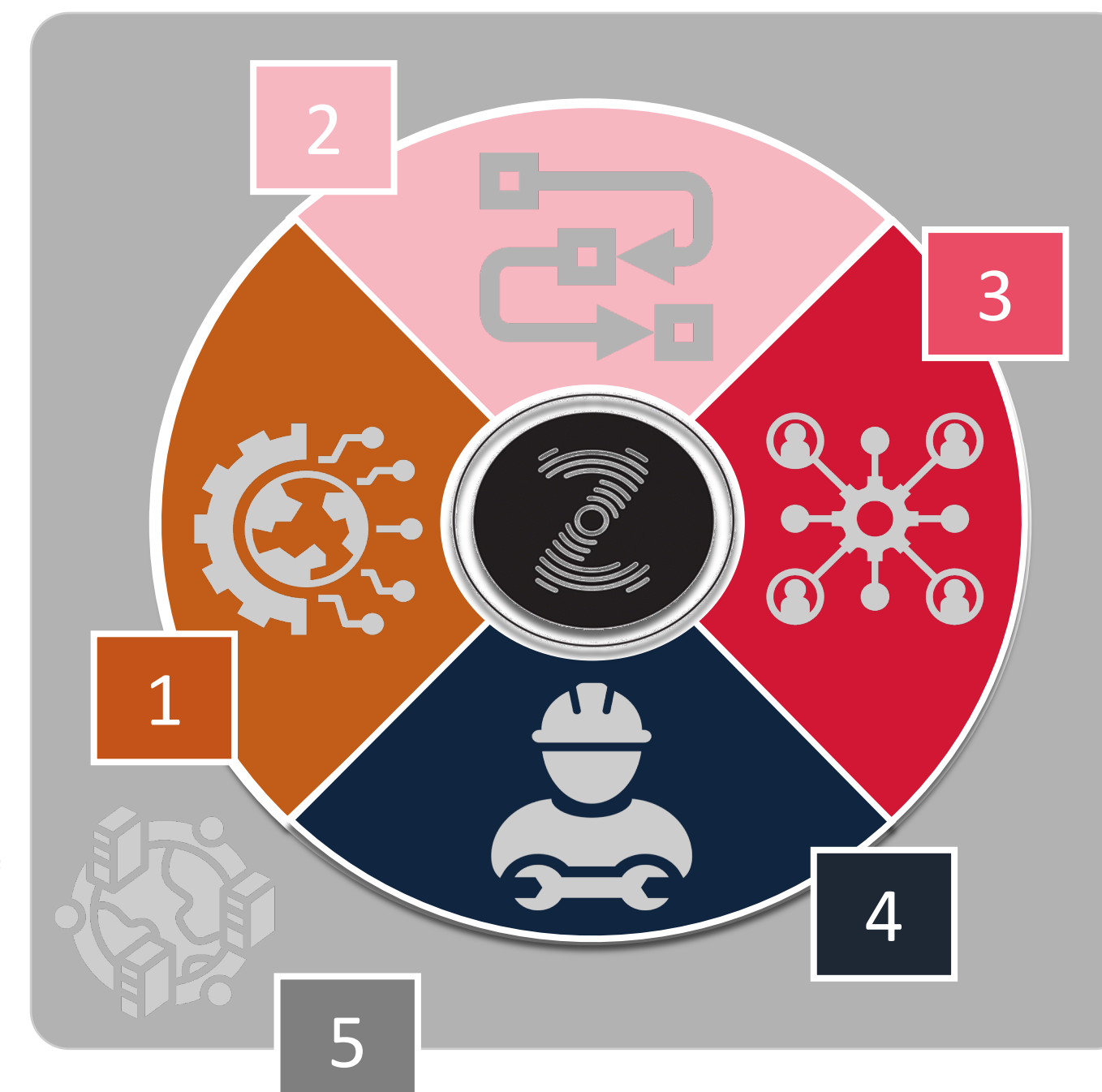
The TAR approach should be used at the beginning of the tech adoption process to guide integration of the key actions required to successfully adopt tech-based solutions in industry.

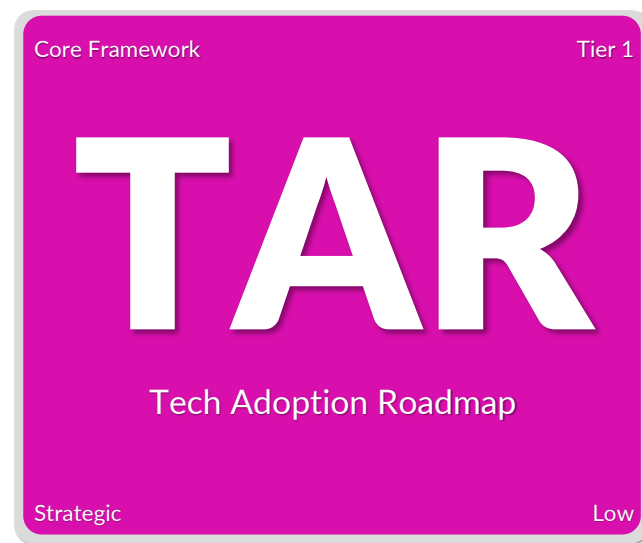


The framework is designed to be flexible for application for any enterprise tech adoption decision.

Sociotechnical System (STS) aspects addressed by module

- 1 Technology
- 2 Tasks/Processes
- 3 Organizational Structure
- 4 Users/Workforce
- 5 Operating Environment





WHAT CAN I ANSWER?

These are key strategic questions that the Tech Adoption Roadmap framework will allow you to address

What are the key phases of the process for effective technology adoption in industry?

What are the specific assessments, analyses, and decisions required within each key phase?

Which actions and key decisions can my organization address internally?

Which actions and key decisions require external expertise and resources?



Title Slide

Introduction

What Is It?

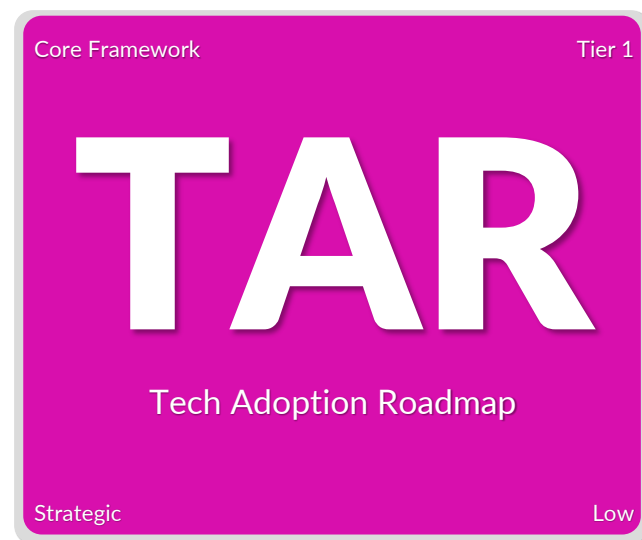
What Can I Answer?

How can I Apply It?

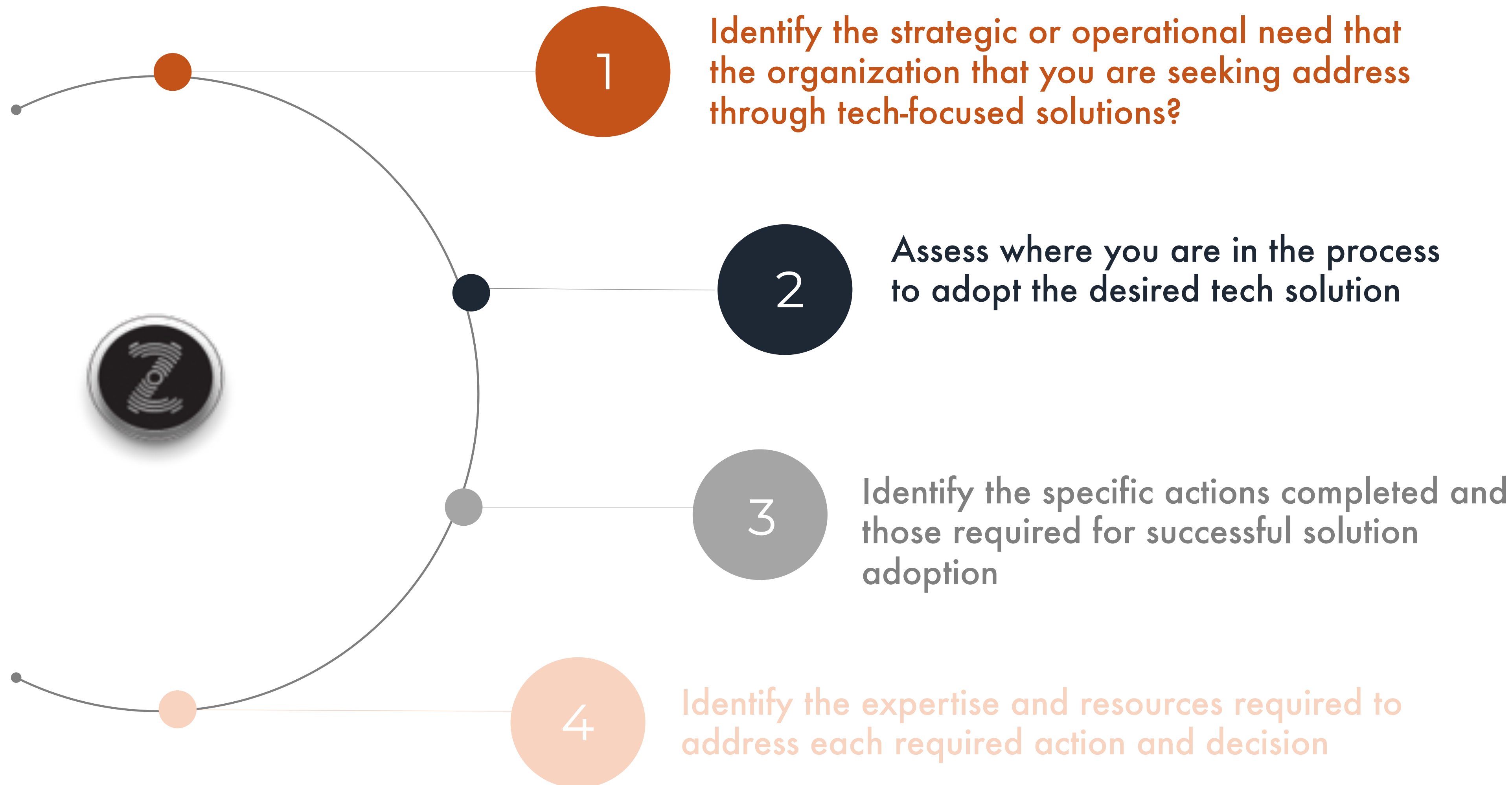
Application Example

More About Zyler

Periodic Table of Methods



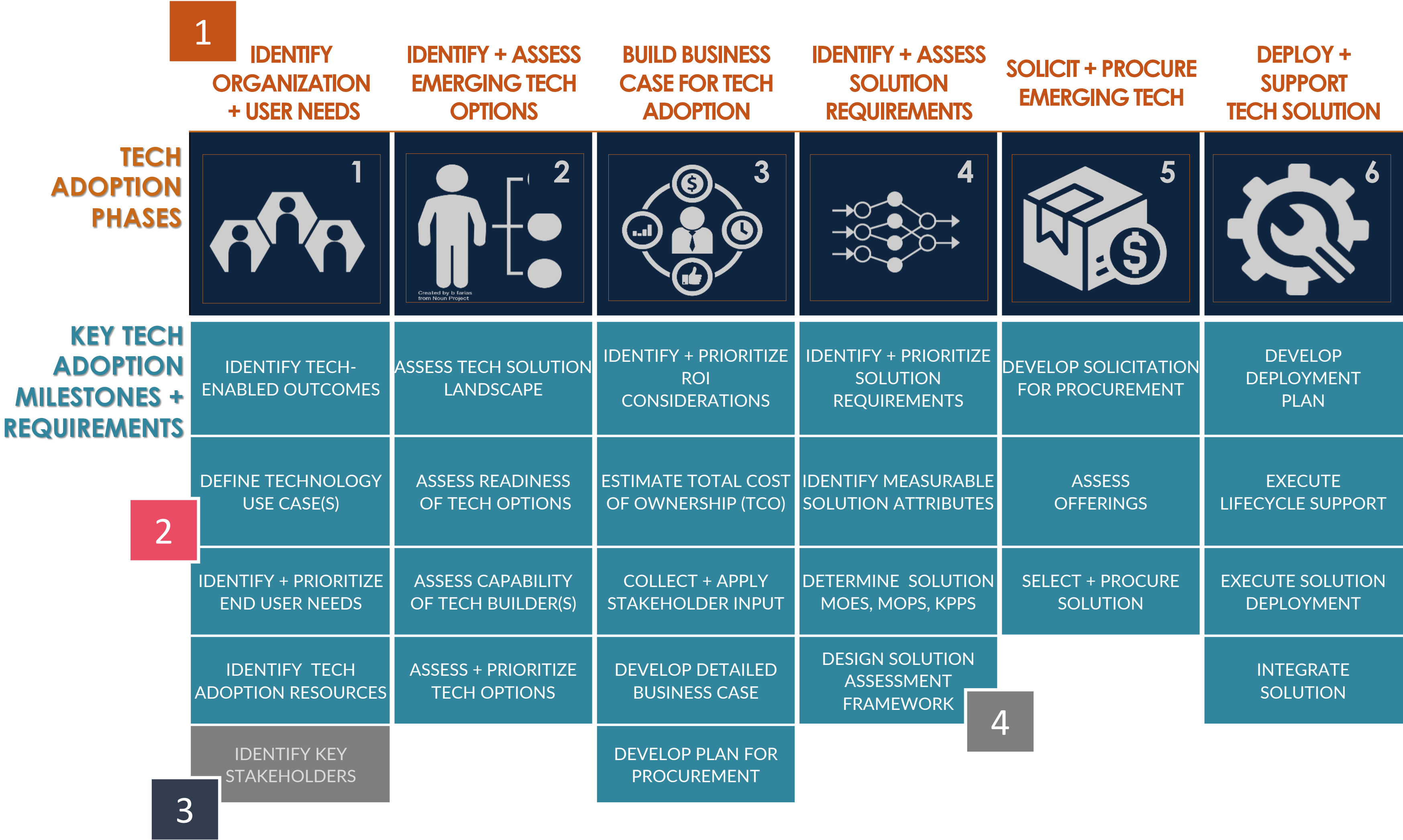
> HOW DO I APPLY IT?





COMPLETE FRAMEWORK

- 1
- The key phases of tech solution adoption
- 2
- The specific assessments, analyses, and decisions required for tech adoption
- 3
- Specific assessments, analyses, and decisions that have been successfully completed
- 4
- TAR actions with supporting *Tool Kit* modules for detailed analysis and assessment



> Why We Built It

We are passionate about the art and strategy of emerging tech adoption. Zylter thrives at the intersection of tech analysis, design and strategy.



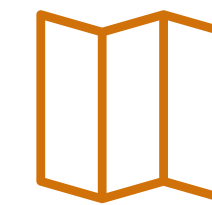
Zylter

To learn more about our work with tech innovators and industry leaders at www.zylter.com



Questions

For more information or help applying this and other Tool Kit resources, contact us at: STS.solutions@zylter.com



Explore

To explore the Tech Strategy Tool Kit further or access other methods and resources visit:

www.zylter.com/sts-toolbox



Connect

We appreciate any feedback you have to improve these methods and how we support them! Reach out to us on LinkedIn or at www.zylter.com

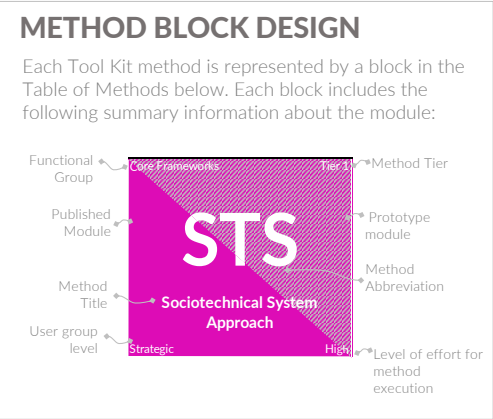


Tech Strategy Tool Kit

Periodic Table of Methods

This periodic table lists and categorizes each of the methods included in the current *Tech Strategy Tool Kit*. The methods are organized by Functional Group based on the functional area addressed and by Tier based on the level of effort and expertise required for execution.

Each module applies methods that are based on industry best practices and that have been applied, refined, and validated through client-focused Zylter projects and analyses.



CORE FRAMEWORKS				STRATEGIC PLANNING			SOLUTION DESIGN + DEVELOPMENT			SOLUTION ADOPTION + LIFECYCLE PLANNING			MARKET ANALYSIS + DEVELOPMENT			USER + WORKFORCE ANALYSIS			PROCESS DESIGN + IMPROVEMENT		
TIER 1 Summary Approaches*	STS Sociotechnical System Approach	TAR Tech Assessment + Adoption Roadmap	TBR Tech Builder Roadmap	SPI Strategic Priority Identification			TRL Technology Readiness Level Assessment	SRL Solution Readiness Level Assessment													
TIER 2 General Assessment	Methods and resources that can be executed with mostly descriptive information and quickly applied to inform key decisions. These methods are general supported by or expanded on by detailed methods and technical analyses.			SEM Strategic Engagement Mapping	OKR Objectives and Key Results Review Design	SR Strat Recommendation Development	UCD Use Case Description	SCS System Component Sketch	SCU System Capability to Use Requirement Crosswalk	ASA Assessment of Solution Alternatives	PPP Pilot Project Plan	DEP Drone Employment Profile	MEC Media Engagement Concept	VPF Value Proposition Framework		UPD User Persona Development	USA User Segmentation Analysis	TFH Task Function Hierarchy Description	TSD Team Structure Design	TAA Task Automation Assessment	OPD Operational Process Description
TIER 3 Detailed Assessment	Methods and resources that compile extensive numeric and/or descriptive information to provide a more detailed examination and assessment.			SFD Strategic Forecast Development	ROI Strategic Return on Investment Assessment	KPI Key Performance Indicator Identification	TUI Technology Use Case Identification	OEA Operating Environment Assessment	PRD Product Requirements Document Design	COA Concept of Operations Assessment	SES System Employment Sketch					SDD Service Delivery Design			AIA Activity Identification Assessment		
TIER 4 Technical Analysis	Methods and frameworks that apply extensive data that is usually numeric and generally requires specialized software and expertise to execute.			SEP Strategic Engagement Prioritization	IPP Intellectual Property Prioritization Framework	IRD Implementation Roadmap Dev	SJM Solution Journey Mapping	SCM System Capability Map	STM System Technology Map	TCO Total Cost of Ownership Assessment	CDR Capability Development Roadmap	SDC Solution Deployment Concept	TAM Total Addressable Market Analysis	PLD Program-Level Development Approach	CLA Competitor Landscape Analysis	QUP Quantitative Usage Profile Creation	QSD Qualitative Survey Design	FTA Functional Task Analysis	PRL Production Readiness Level	ABM Activity Based Management Design	OPM Operation Process Mapping

* TIER 1: SUMMARY APPROACHES: High-level approaches and resources that requires execution of multiple higher-tier methods to successfully complete. These are the core execution roadmaps for Tech Builder growth milestones, Tech Seeker solution adoption stages and the SocioTechnical System Model that guides Zylter design of specific methods.

Core Framework

Tier 1

TAR

Tech Adoption Roadmap

Strategic

Low

Title Slide	Introduction	What Is It?	What Can I Answer?	How can I Apply It?	Application Example	More About Zyler	Periodic Table of Methods
-------------	--------------	-------------	--------------------	---------------------	---------------------	------------------	---------------------------